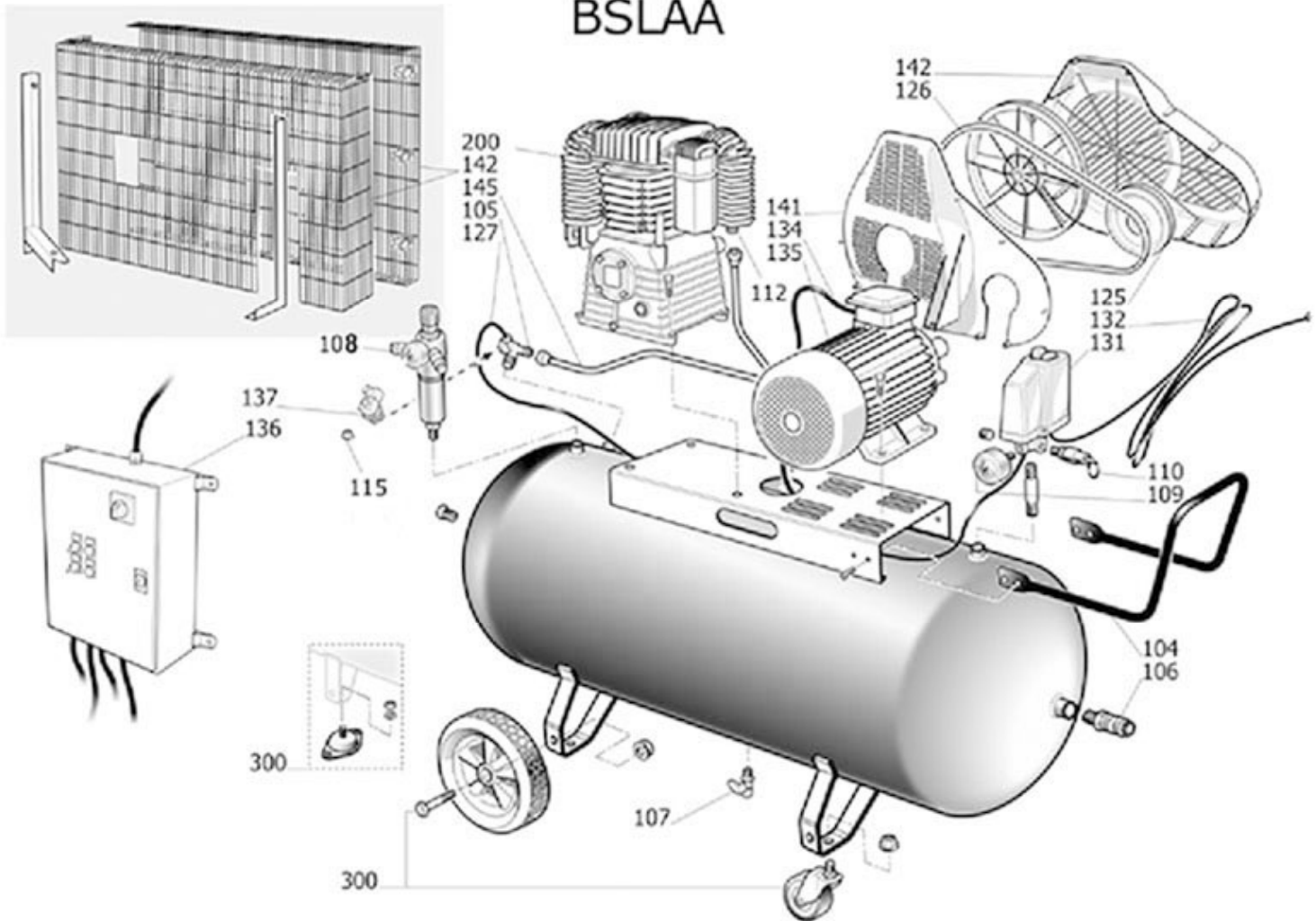
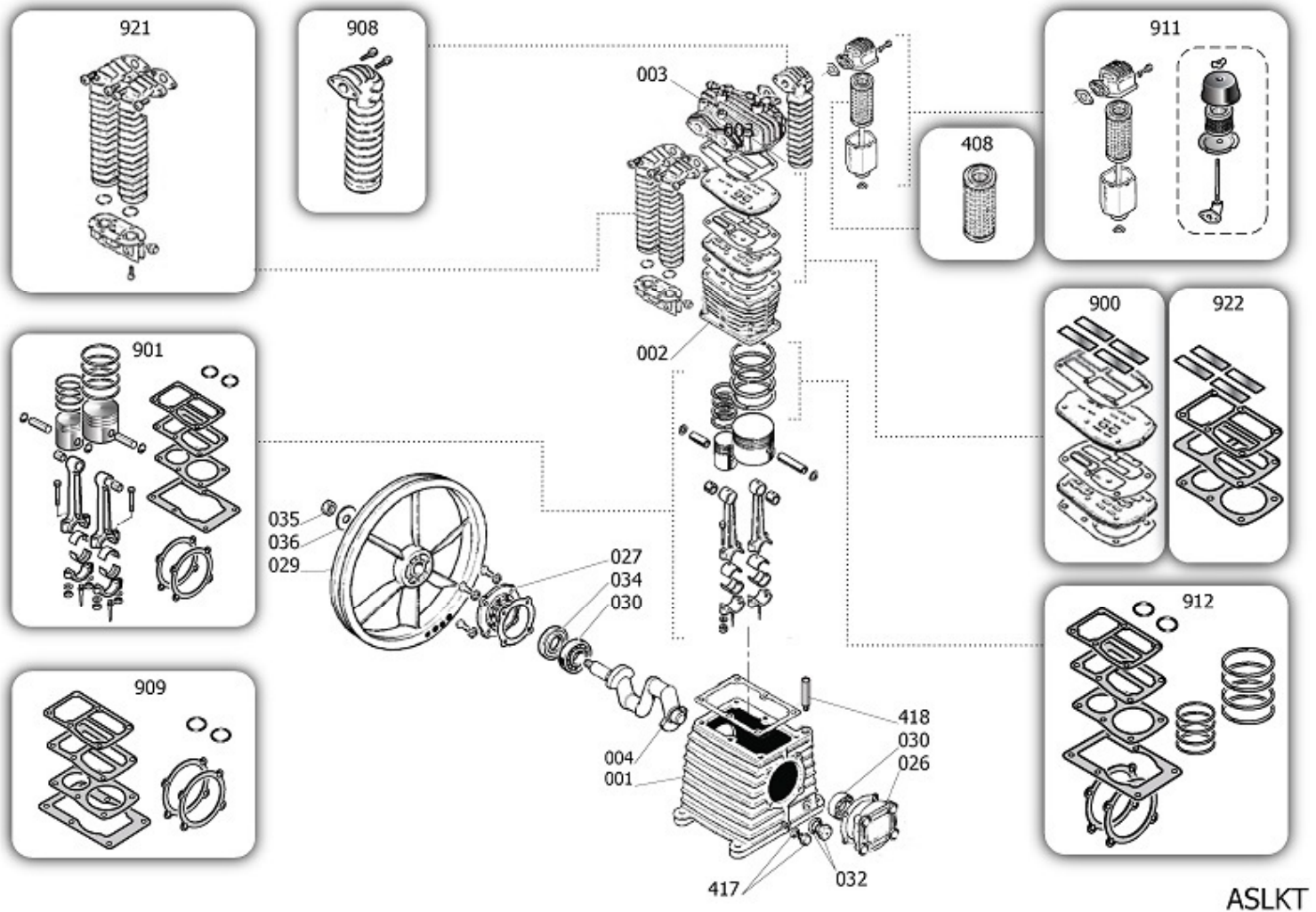


BSLAA



| Pos | Component | MU | Multiplier |
|-----|-----------|----|------------|
| 105 | 4101335 | PZ | 1,0 |
| 106 | 9047089 | PZ | 1,0 |
| 107 | 9047079 | PZ | 1,0 |
| 109 | 9052271 | PZ | 1,0 |
| 110 | 9049305 | PZ | 1,0 |
| 112 | 4101334 | PZ | 1,0 |
| 125 | 9076610 | PZ | 1,0 |
| 126 | 9075879 | PZ | 1,0 |
| 127 | 9270046 | MT | 1,0 |
| 131 | 9063241 | PZ | 1,0 |
| 132 | 9065411 | PZ | 1,0 |
| 134 | 9065413 | PZ | 1,0 |
| 135 | 848S00A | PZ | 1,0 |
| 142 | 834302A | PZ | 1,0 |
| 145 | 9043981 | PZ | 1,0 |
| 200 | SL0000A | PZ | 1,0 |
| 300 | 9420592 | PZ | 1,0 |



| Pos | Component | MU | Multiplier |
|-----|-----------|----|------------|
|-----|-----------|----|------------|

| | | | | |
|-----|---------------|----------------------------|----|-----|
| 1 | \$33102030 | CARTER | PZ | 1,0 |
| 2 | \$31602020SGL | CILINDRO | PZ | 1,0 |
| 3 | SL61400 | CABEZAL | PZ | 1,0 |
| 4 | P021804 | ARBOL | PZ | 1,0 |
| 26 | \$30402740 | TAPA DELANTERA | PZ | 1,0 |
| 27 | \$30402800 | SOPORTE TRASERO CARCASA | PZ | 1,0 |
| 29 | \$31002680 | VOLANTE | PZ | 1,0 |
| 30 | \$30302140 | RODAMIENTO 6206 C3 | PZ | 2,0 |
| 32 | \$36531150 | INDICADOR ACEITE | PZ | 1,0 |
| 34 | \$30302150 | JUNTA | PZ | 1,0 |
| 35 | \$37403780 | TORNILLO VOLANTE | PZ | 1,0 |
| 36 | \$37502450 | ARANDELA VOLANTE | PZ | 1,0 |
| 408 | 9434N01 | MPK ELEM.FILTR.EXA K17-K50 | PZ | 1,0 |
| 417 | \$36531140 | TAPON ACEITE | PZ | 1,0 |
| 418 | \$12505950 | KIT TAPPO SFIATO | PZ | 1,0 |
| 900 | 9434A14 | MPK PIASTRA VALVOLE K30 | PZ | 1,0 |
| 901 | 9434B18 | MPK PISTONE-BIELLA K30 | PZ | 1,0 |
| 908 | 9434E07 | MPK COLLETTORE K30 | PZ | 1,0 |
| 909 | 9434F15 | MPK GUARNIZIONI K30 | PZ | 1,0 |
| 911 | 9434M01 | KIT FILTRO AIRE | PZ | 1,0 |
| 912 | 9434C17 | MPK SEGMENTI K30 | PZ | 1,0 |
| 921 | 9434D03 | MPK COLL.INTERMEDIO K30-60 | PZ | 1,0 |
| 922 | 9434H07 | MPK MANUT.PV K30-K60 | PZ | 1,0 |